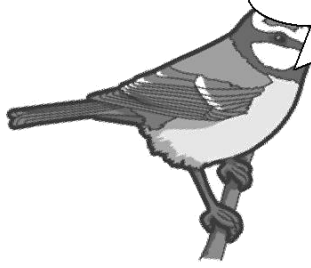
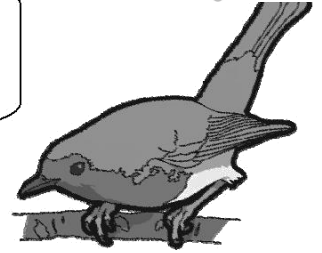
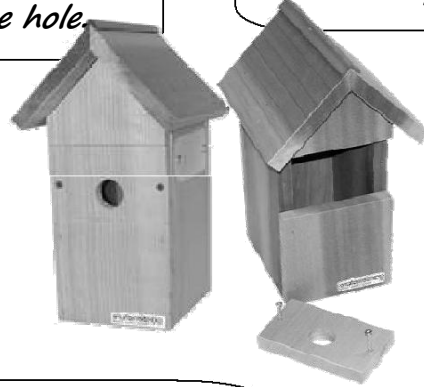


# Who would nest here?

We like to use nest boxes with a circular entrance hole.



We prefer the box to have an open front.



Here is some information about birds and nest boxes...



Use this information to complete the activity sheet

Bird	Type of nest box	Where to put the nest box
Blue tit	Hole	1 – 5 m off the ground with clear flight path to entrance hole
Great tit	Hole	1 – 5 m off the ground with clear flight path to entrance hole
Coal tit	Hole	Near to ground
House sparrow	Hole	2 – 5 m off the ground, fixed to tree or building
Tree Sparrow	Hole	2 – 5 m off the ground in a quiet area
Nuthatch	Hole	3m or more off of the ground with clear flight path to entrance hole
Starling	Hole	2.5m or more off of the ground on a tree trunk or building
Robin	Open	1 – 3 m off of the ground, well hidden by thick vegetation
Owl	large hole	High up in a tree with a clear flight in
Wren	Open	1 – 3 m off of the ground, well hidden by thick vegetation